



Dektite Premium

More flexible sizing for better coverage.



- Low profile base with watershed sleeve**
Improves water run off and protects silicone sealant
- Larger square base will cover a larger opening**
So more forgiving for penetration openings and allows for steeper roof pitch
- Unique cone design**
Provides 0.5" continuous contact with flashed pipe providing a watertight seal
- Metric and imperial measurements**
Clear Markings makes for easier cutting to pipe size
- Size Ranges - Numbers 0-9**
Available in Black and Grey EPDM, and Red Silicone
- Twenty year warranty**
Just fit it and forget it - we've got you covered

Selection Guide

DEKS Code			Description	Pipe OD	Base Size	Roof Pitch	Carton QTY
Black EPDM	Grey EPDM	Red Silicone					
DFE10MB	DFE10MG	DFE10MRE	Dektite Premium Micro	0 - 0.75	2.34 x 2.34	12/12	20
DFE100B	DFE100G	DFE100RE	Dektite Premium #0	0 - 1.5	4 x 4	12/12	20
DFE100BS	DFE100GS	DFE100RES	Dektite Premium #0 Solar	0 - 1.5	4 x 4	12/12	20
DFE101B	DFE101G	DFE101RE	Dektite Premium #1	0 - 2.75	5.5 x 5.5	12/12	15
DFE101BM			Dektite Premium Multicable	0 - 0.25	5.5 x 5.5	12/12	15
DFE101BS	DFE101GS	DFE101RES	Dektite Premium #1 Solar	0.25 - 2.25	5.5 x 5.5	12/12	15
DFE102B	DFE102G	DFE102RE	Dektite Premium #2	0.25 - 3	7 x 7	12/12	15
DFE102BA	DFE102GA	DFE102REA	Dektite Premium 50-76	2 - 3	7 x 7	12/12	15
DFE103B	DFE103G	DFE103RE	Dektite Premium #3	0.25 - 5	8.75 x 8.75	12/12	15
DFE104B	DFE104G	DFE104RE	Dektite Premium #4	3 - 7	11 x 11	12/12	10
DFE105B	DFE105G	DFE105RE	Dektite Premium #5	4 - 8	12.25 x 12.25	10/12	10
DFE106B	DFE106G	DFE106RE	Dektite Premium #6	5 - 9	14.25 x 14.25	10/12	10
DFE107B	DFE107G	DFE107RE	Dektite Premium #7	6 - 12	18 x 18	10/12	10
DFE108B	DFE108G	DFE108RE	Dektite Premium #8	6.75 - 14	19.5 x 19.5	12/12	5
DFE109B	DFE109G	DFE109RE	Dektite Premium #9	9 - 20	26.75 x 26.75	12/12	5

Available in Black and Grey EPDM or Red Silicone.

EPDM will withstand constant temperatures at the roofline of -58°F to 239°F and up to 302°F intermittently.

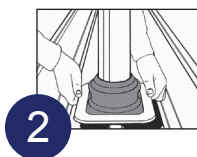
Red Silicone will withstand constant temperatures at the roofline of -58°F to 392°F and up to 482°F intermittently.

Please Note that the outside temperature of the pipe may be significantly different to the exit temperature of the appliance.

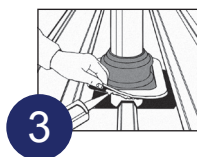
Installation Information



1 Trim the cone to suit pipe size using sharp tin snips.



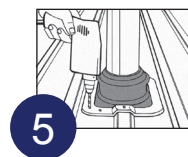
2 Slide down pipe using water as a lubricant.



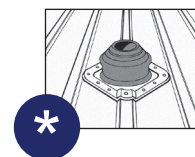
3 Apply sealant by turning back flexible flange.



4 Press base to the roof profile by hand. Smooth out any awkward creases. Don't fully extend to allow for vibration.



5 Fasten using self-sealing fasteners or pop (sealed) rivets.



* A Dektite may be fitted on the 'diamond' for enlarged holes and penetrations on steep pitched roofs up to 12/12 or deep corrugations.

- Always use the neutral cure low modulus silicone for sealing
- In corrosive and coastal environments, fix using blind aluminum rivets

Check out DEKS Combo range for flashing around existing pipes and DEKS Solar range for solar flashings at www.deks.com.au. Need to flash a tiled roof? Contact DEKS to discuss the tile roof flashing range.