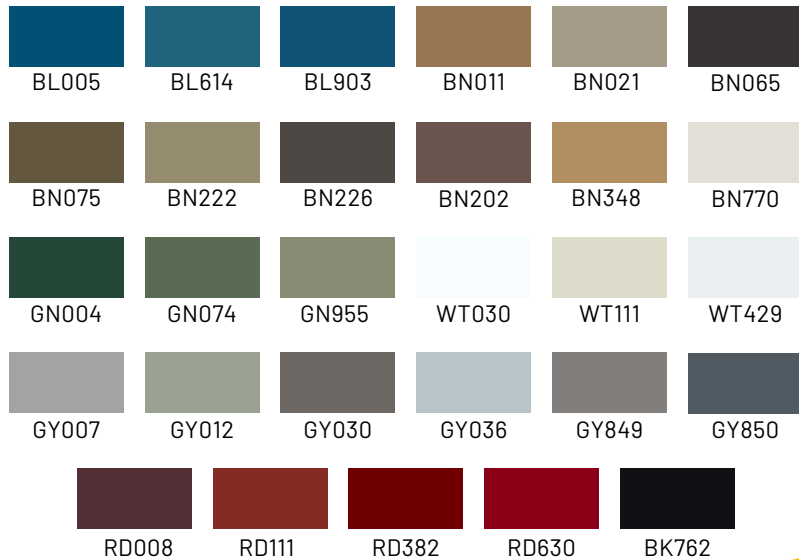


ACCESSORIES

# RIVETS



**STOCKED PAINTED**

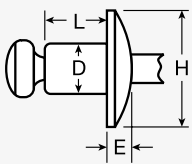
Actual Paint color may vary.  
For exact color match,  
please request actual  
sample

**BUTTONHEAD RIVETS**

Rivets in the 29 colors  
above are stocked in 1/8 x  
3/16 All Stainless

**STAINLESS STEEL**

Stainless steel Rivet and  
Mandrel, IFI Grade 51



Buttonhead Rivet No.	D		H		E		L		Grip Range			
	Rivet Dia. Nom Inch		Drill No & Hole Size		Head Dia		Head Height		Rivet Length Max			
	Inch	mm	Inch	mm	Inch	mm	Inch	mm	Inch	mm		
SSB4-2S	1/8"	3.2	#30	3.3	.250	6.35	.040	1.02	.275	7.0	.063-.125	1.7-3.2
SSB4-3S	(.125)		(.129-.133)	(3.28-3.38)					.337	8.6	.126-.187	3.3-4.8

